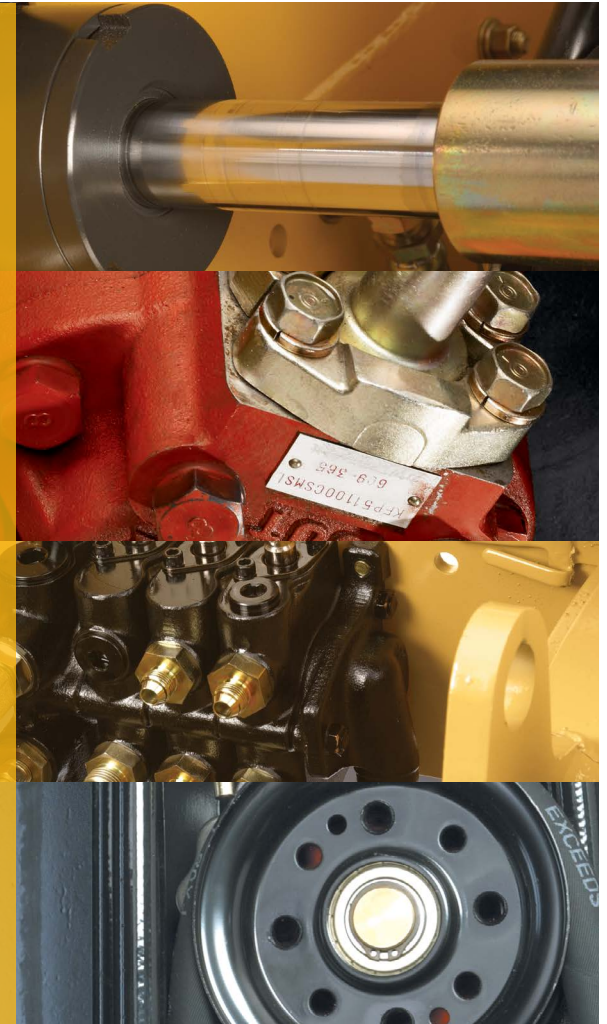


VITAL SIGNSSM HYDRAULIC SYSTEM

Many lift trucks may encounter harsh environmental conditions — such as extreme temperature changes and prolonged exposure to chemicals — shift after shift, day after day. This can accelerate the maintenance needs of your hydraulic system and compromise the operation of your lift truck. As a precaution, individual hydraulic system components should be inspected on a regular basis to help minimize downtime and product damage. Some environments or applications may require optional equipment. Ask your Cat[®] lift truck dealer for details.



1471 Jersey Avenue | North Brunswick, NJ 08902
P: 732.220.0444 | F: 732.220.0440 | tri-liftnj.com/service

[click below to](#)



REQUEST SERVICE



CONTACT US

- Hydraulic Control Valve
- Lift Cylinder
- Tilt Cylinder
- Hydraulic Hoses
- Auxiliary Lines
- Hydraulic Fluid
- Hydraulic Filter
- Steering System



A SYSTEM IS ONLY AS STRONG AS ITS WEAKEST LINK

Parts from original equipment manufacturers pass a variety of tests to uphold the warranty protection of your investment. Genuine Cat lift truck parts match our equipment specifications and help provide reliable performance.

Cat lift truck dealers make significant investments in professionally trained service technicians, state-of-the-art diagnostic tools, completely stocked service vans and excellent parts inventory to help keep your lift trucks on the job.



HYDRAULIC CONTROL VALVE

Incorrect hydraulic pressure can damage seals and restrict lift capacity. External leaks from the control valve and other sealed areas can contaminate the operating environment, accelerate component wear and reduce performance.



HYDRAULIC HOSE AND AUXILIARY LINES

Missing or damaged hoses, tubes, lines and/or retainers could result in routing and interference problems. Bent or damaged hydraulic hose sheaves can damage the hoses. Both can result in oil leakage into the operating environment.



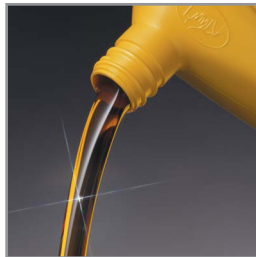
STEERING SYSTEM

Leaking steering cylinders and/or hydraulic connections may contaminate the operating environment and result in loss of steering. Low fluid levels can accelerate hydraulic component wear.



LIFT CYLINDER

Lift cylinder oil leaks could result in load drift problems and contamination of the operating environment. Low fluid can accelerate wear of hydraulic components. Leaks can occur externally or internally within the cylinder.



HYDRAULIC FLUID

Low fluid levels or heavy particles in the hydraulic oil can accelerate wear of the hydraulic pump and other hydraulic system components.



TILT CYLINDER

Tilt cylinder oil leaks could cause uncontrolled mast movement and contamination of the operating environment. Low fluid can accelerate wear of hydraulic components. Leaks can occur externally or internally within the cylinder.



HYDRAULIC FILTER

A clogged suction strainer or return filter restricts oil flow, increases system pressure and accelerates wear of internal hydraulic components, all of which can lead to premature system failure.



[click below to](#)



REQUEST SERVICE



CONTACT US

Refer to your operation and maintenance manual for daily inspection and scheduled maintenance intervals.

Copyright © 2013. All rights reserved. CAT, CATERPILLAR, their respective logos, "Caterpillar Yellow" and the POWER EDGE trade dress, as well as corporate and product identity used herein, are trademarks of Caterpillar and may not be used without permission. All registered trademarks are the property of their respective owners. Some products may be shown with optional equipment.

